

Altringham Road

WHITEHALL

APPROXIMATE FLOOR AREA
67.3 SQM / 724 SQFT



GARDEN SAUNA
(NOT INC IN TOTAL SQ M)
0 sq ft. (0.0 sq m.) approx.



SAUNA
3'10" x 3'2"
1.16m x 0.97m

GROUND FLOOR
296 sq ft. (27.3 sq m.) approx.



KITCHEN
8'11" x 8'0"
2.73m x 2.43m
Max Dimensions

DINING ROOM
15'9" x 9'10"
4.81m x 3.00m

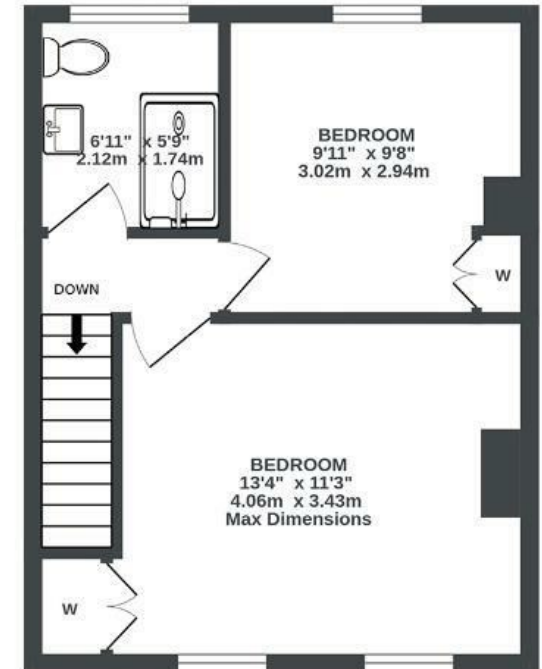
LIVING ROOM
13'1" x 10'4"
4.00m x 3.16m
Measured Into Bay

HALL

C/B

UP

1ST FLOOR
326 sq ft. (30.3 sq m.) approx.



BEDROOM
9'11" x 9'8"
3.02m x 2.94m

BEDROOM
13'4" x 11'3"
4.06m x 3.43m
Max Dimensions

DOWN

UP



Illustrations are for reference purposes only, measurements are approximate, not to scale.

Boardwalk

Altringham

WHITEHALL, BRISTOL

£

£375,000

zzz

2 Bedrooms



BS5 7AS



1 Bathrooms

"Living in St George has been wonderful. Having the park just a few steps away has been a total delight, wheeling the BBQ down to the park in summer for a picnic has to be one of the highlights as well as the friendly neighbours on our street. We've turned a rather tired property into a beautiful, cosy home which is perfect for hosting dinner parties and sharing great times with friends."

